

Welcome to

 **DAMBIS**
JOINT STOCK COMPANY

www.dambis.com

Basic facts about DAMBIS

- JSC (joint stock company) Dambis was founded in 1992;
- Employees - in year 2018– 75;
- Turnover
 - in 2016 : 2,9 million EUR;
 - In 2017 : 3,5 million EUR
- EN ISO 9001:2000 Quality Management System conformity certificate.
- EN ISO 14001:2004 Environmental Management System conformity certificate.
- EN 1090-1:2009+A1:2011 , Execution Class 2 (EXC2)

JSC DAMBIS main directions are:

- **Metal working** - (CNC milling, turning, machining, cold stamping, workpiece cutting, welding, sheet material treatment – punching, bending).
- **Surface coating** – (shot-blast cleaning, vapour blasting, steel phosphatization, spray-powder coating).
- **Assembly works**

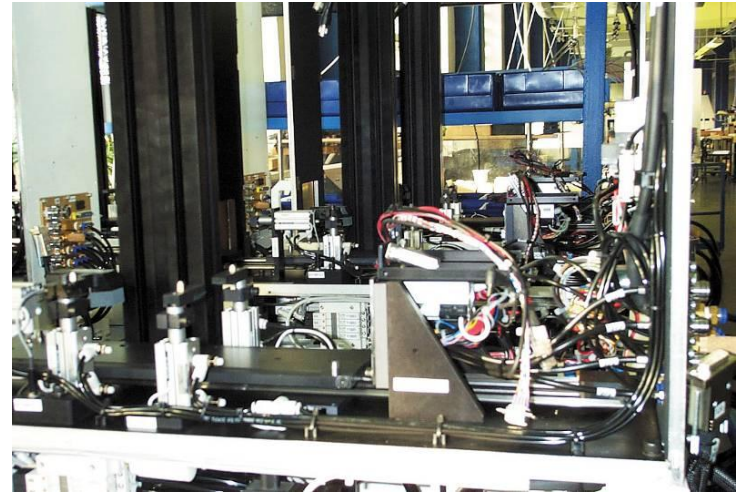
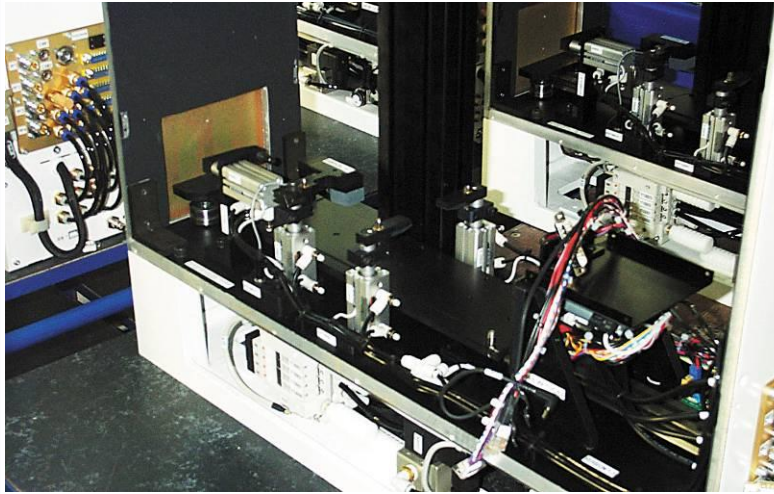
JSC DAMBIS main products are:

**Electromechanical
equipment;**

- **cabinets;**
- **boards;**
- **control boxes.**



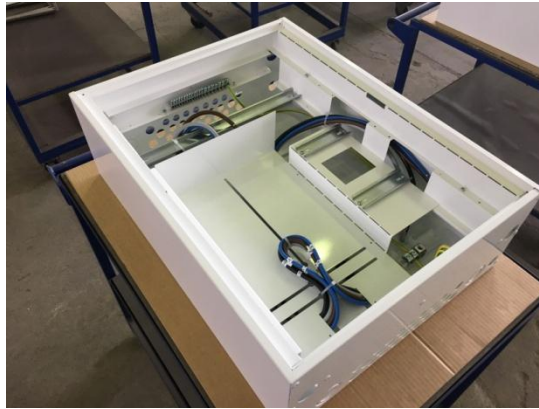
JSC DAMBIS main products are:



JSC DAMBIS main products are:



Cabinets



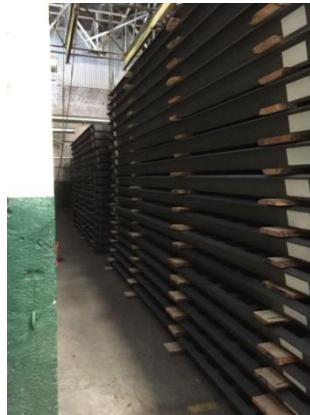
JSC DAMBIS products are:

**Steel
containers**



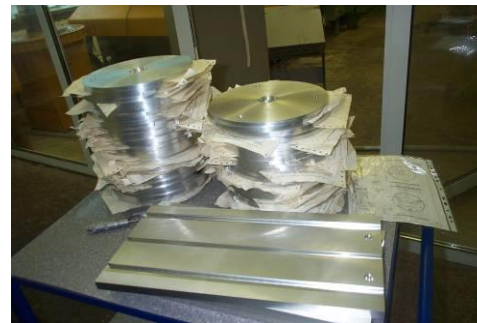
JSC DAMBIS products are:

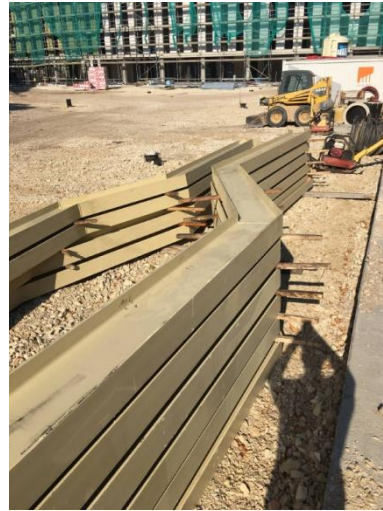
**Bent and welded
metal structures;**



JSC DAMBIS products are:

**Metal parts and
articles, inclusive
made on CNC
machines;**

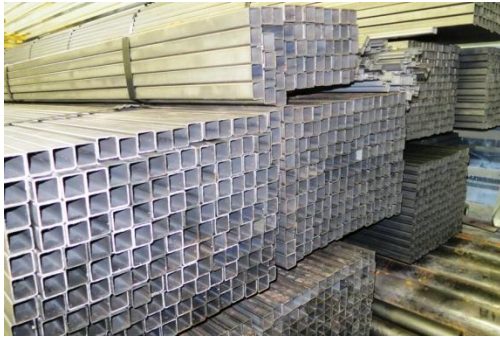




Metal structures for construction business



Metal structures for construction business



JSC DAMBIS machinery park:

High investments were done to increase productivity and capacity, in year 2005 machine park JSC Dambis was completed with 15 new CNC machines and equipment including the ones in next slides.

- CNC Vertical Machining Centre with accessories;
- CNC Horizontal Machining Centre with accessories;
- CNC Two-spindle Turning-Milling Centre with accessories;
- CNC Hydraulic pressbrake with accessories;
- CNC Hydraulic coordinate punch press with accessories;
- CNC Laser cutting equipment with accessories;
- Lathe with accessories and Lathe with electronic control;
- CNC Hydraulic quilloine shear and accessories;

CNC coordinate meter equipment MITUTOYO CRYSTA-APEX C 9166

Range of measurement: X = 905 mm, Y = 1605 mm, Z = 605 mm

Resolution = 0,0001 mm

Drive speed/CNC mode:

max.moving speed = 520 mm/s (3D)

max.measuring speed = 8 mm/s

Drive speed / Joystick mode:

moving speed = 0 – 80 mm/s

Measuring speed = 0 – 3 mm/s

Max.acceleration: 0.23G (3D)

Measurement table:

Material – granite stone

Size – 1060 x 2320 mm

Workpiece:

Max.height: 800 mm

Max.weight: 1500 kg

Width: 1670 mm

Depth: 2690 mm

Height: 2730 mm



CNC Hydraulic coordinate punch press TRUMPF TRUMATIC 200R

Press capacity = 20 t

Brush table

Sheet size without repositioning X = 2070 mm, Y = 1270 mm

Sheet size with one repositioning X = 4000 mm, Y = 1270 mm

Sheet thickness = 6.4 mm

Position accuracy < +/- 0.1 mm

Number of tools with

Multitools system = 90 pcs max

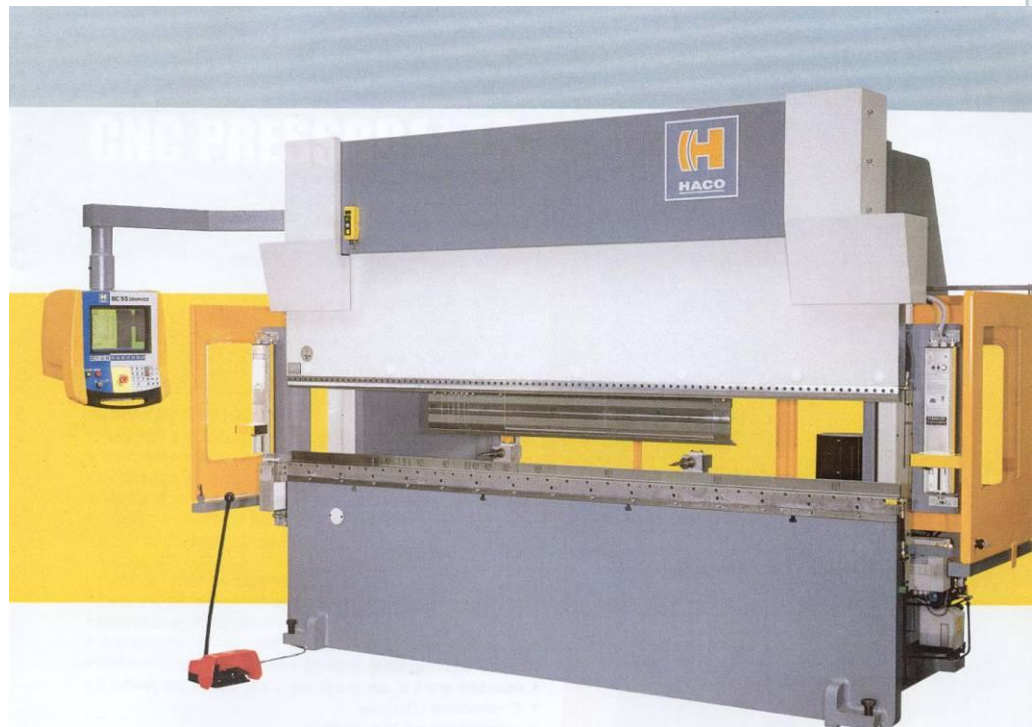
Incl. number of

rotating tool stations = 15 pcs



CNC Hydraulic pressbrake HACO EUROMASTER 30150

Capacity = 150 t
Frame distance = 2600 mm
Working length = 3100 mm
Stroke length - 200 mm
X distance = 1000 mm
Open height = 400 mm
Hydraulic sheet
following system
Axes control = 6



CNC Hydraulic guillotine HACO TSX 30121 SAB

Capacity mild steel - 0.5 - 12 mm
Cutting length = 3050 mm
Power backgauge stroke = 1000 mm
Swing – away backgauge stroke
Control: Enter the sheet thickness;
Automatic cutting angle adjustment
as a function of sheet thickness;
Automatic hydraulic blade gap adjustment
as a function of sheet thickness;
Stroke control adjustment;
Automatic position of the backgauge –
position with electronic read – out;
Automatic programmable
retraction of backgauge;
Back soft sheet support.



CNC Vertical Machining Centre HAAS VF-7/50-Taper

Travels (mm) :X = 2134 ; Y = 813 ; Z = 762

Table size (mm) Length = 2134 ; Width = 711

Spindle: Taper size CT 50

Speed (rpm) = 7500

Spindle motor power (kW) - 22.4

Automatic tool changer:

Capacity - 30 + 1

Accuracy (mm) :

Positioning $\leq \pm 0.00762$

Repeatability $\leq \pm 0.00508$

4 – axis control



CNC Horizontal Machining Centre BRIDGEPORT HMC 700e

Travels (mm) : X = 710 ; Y = 610 ; Z = 610
Pallet changer (2 pallets) size = 500 x 500 mm
Spindle: Taper size BT 40
 Speed (rpm) = 10000
 Spindle motor power (kW) = 18
Automatic tool changer (taper BT 40) :
 Capacity - 60
Accuracy (mm) :
 Positioning $\leq \pm 0.0075$
 Repeatability $\leq \pm 0.004$
4 axis control



CNC Two –spindle Turning-Milling centre GOODWAY GS-280MS

Chuck size = 10"

Bar capacity (max) = 75 mm

Max turning diam. = 400 mm

Max turning length = 590 mm

Main spindle: Speed (rpm) = 40 - 4000

Main motor = 15 kW

Sub – spindle: Bar capacity = 30 mm

Speed (rpm) = 60 - 6000

Spindle driven motor = 7.5 kW

Rotating power turret head positions = 12

Accuracy (mm) : Positioning \leq +/- 0.005

Repeatability \leq +/- 0.003

Travels (mm) : X = 260 ; Z = 630

Automatic bar feeder: Bar length = 3300 mm;

Bar diameter min = 8mm, max = 75 mm

- ▶ 30° slant-bed design provides smooth chip disposal and easier operator access.
- ▶ Stainless steel way covers and special steel wipers molded with industrial strength rubber are used for durability.
- ▶ Fully enclosed splashguards keep chips and coolant contained for a safe clean working environment.



- ▶ The auto lubrication system delivers metered amounts of lubrication to the slide ways, ball screws, and vital components. Distribution is automatically shut off during idling to prevent waste. (GS-280MS model shown with optional access)

*1 Individual models may vary, please see "Specification" page or interference drawings for details.

*2 Optional 10" Big-bore hydraulic cylinder & chuck provide \varnothing 78 mm (3.07") bar capacity.

CNC PINACHO lathe MUSTANG 225x1500

Swing over bed = 450 mm

Distance between centres = 1500 mm

Main spindle: Spindle bore = 65 mm

Speed variable (rpm) = 0 - 3000

Main motor = 7.5 kW

Automatic turret head positions = 8



DAMBIS offers

- **Precise metal working:**
 - CNC turning;
 - CNC milling;
- **Sheet metal working, i.e:**
 - CNC bending (table length 4000mm);
 - Punching;
 - Electric cabinet manufacturing (assembling included)
- **Punched, bent and welded steel structures and articles;**
- **Surface coating:**
 - Blasting
 - Wet and powder painting.

Cooperation partners



K.HARTWALL



MALMAR
STRONG PARTS FOR YOUR PRODUCT



DIEFFENBACHER



Contact persons:

Ilmārs Zausajevs - Memeber of the Board:

TEL: +371 67381025

ilmars.zausajevs@dambis.com

Aleksandrs Žuravskis - Memeber of the Board:

TEL: +371 29765014

aleksandrs.zuravskis@dambis.com

Jānis Šenkevics – Project Manager

TEL.: + 371 26194181

janis.senkevics@dambis.com